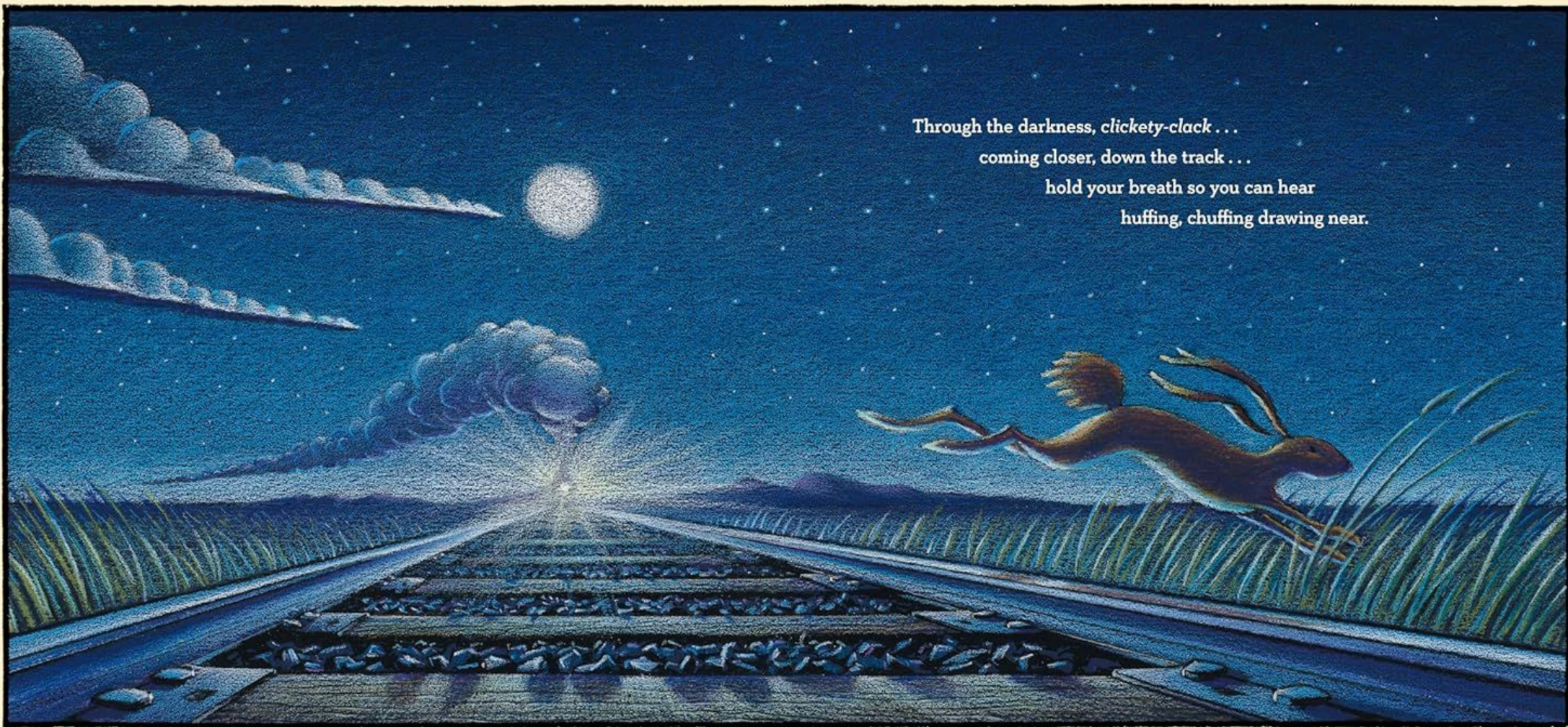
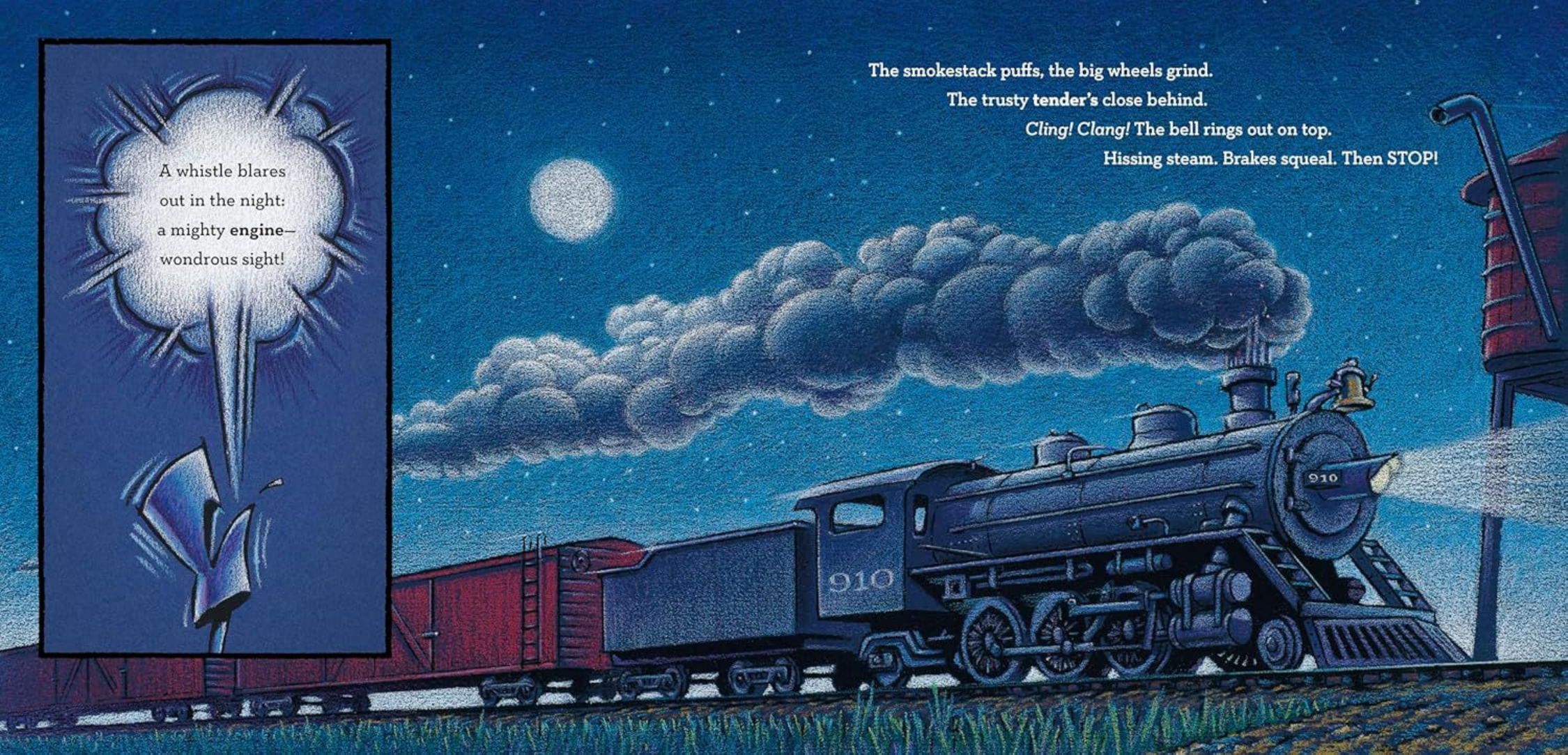


Through the darkness, *clickety-clack* . . .
coming closer, down the track . . .
hold your breath so you can hear
huffing, chuffing drawing near.



A detailed illustration of a steam locomotive pulling a train at night. The locomotive is dark blue with the number '910' on its side and front. It is emitting a large plume of white steam from its smokestack. The train consists of a red boxcar and a dark blue tender. The scene is set against a dark blue night sky with a full moon and stars. A red water tower is visible on the right. A large, stylized white cloud with radiating lines is on the left, containing text.

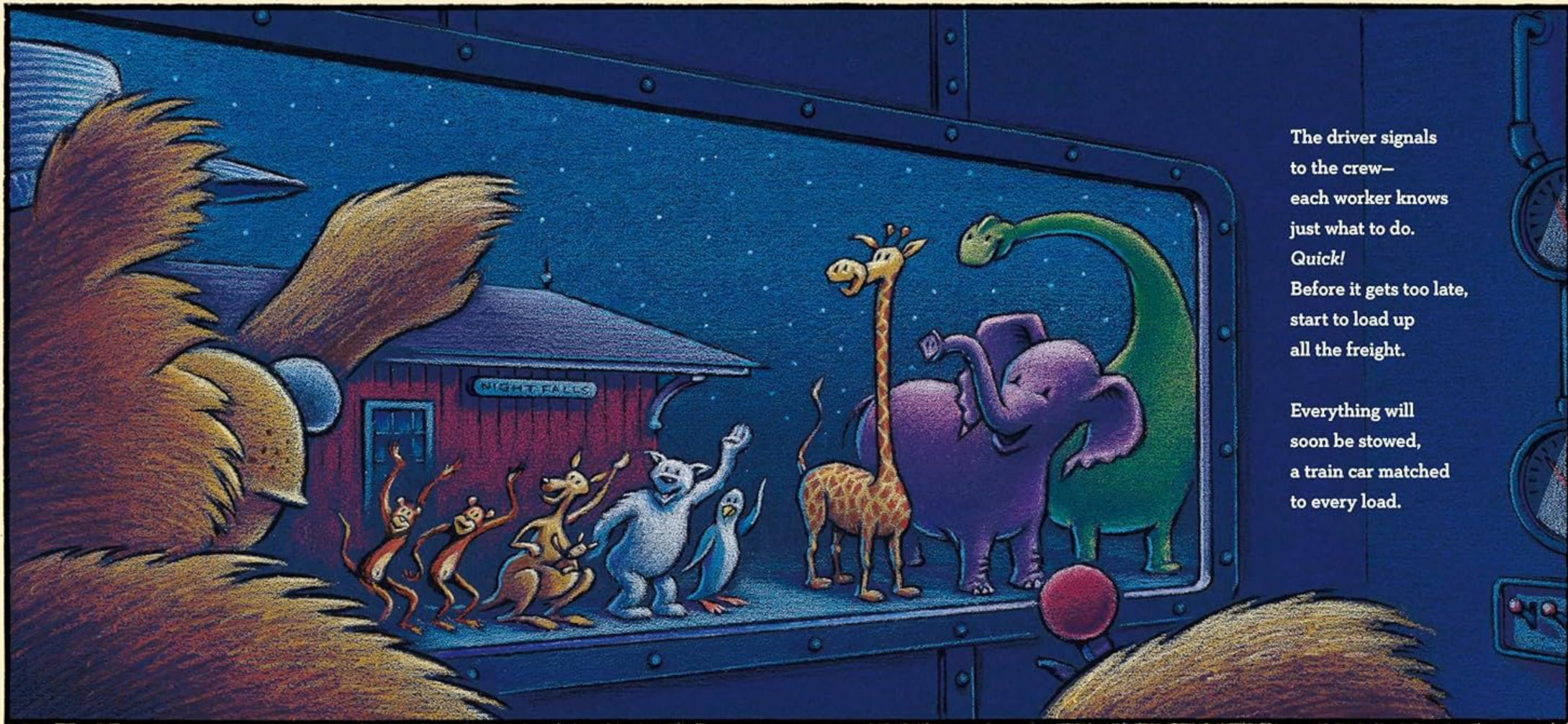
A whistle blares
out in the night:
a mighty engine—
wondrous sight!

The smokestack puffs, the big wheels grind.

The trusty tender's close behind.

Cling! Clang! The bell rings out on top.

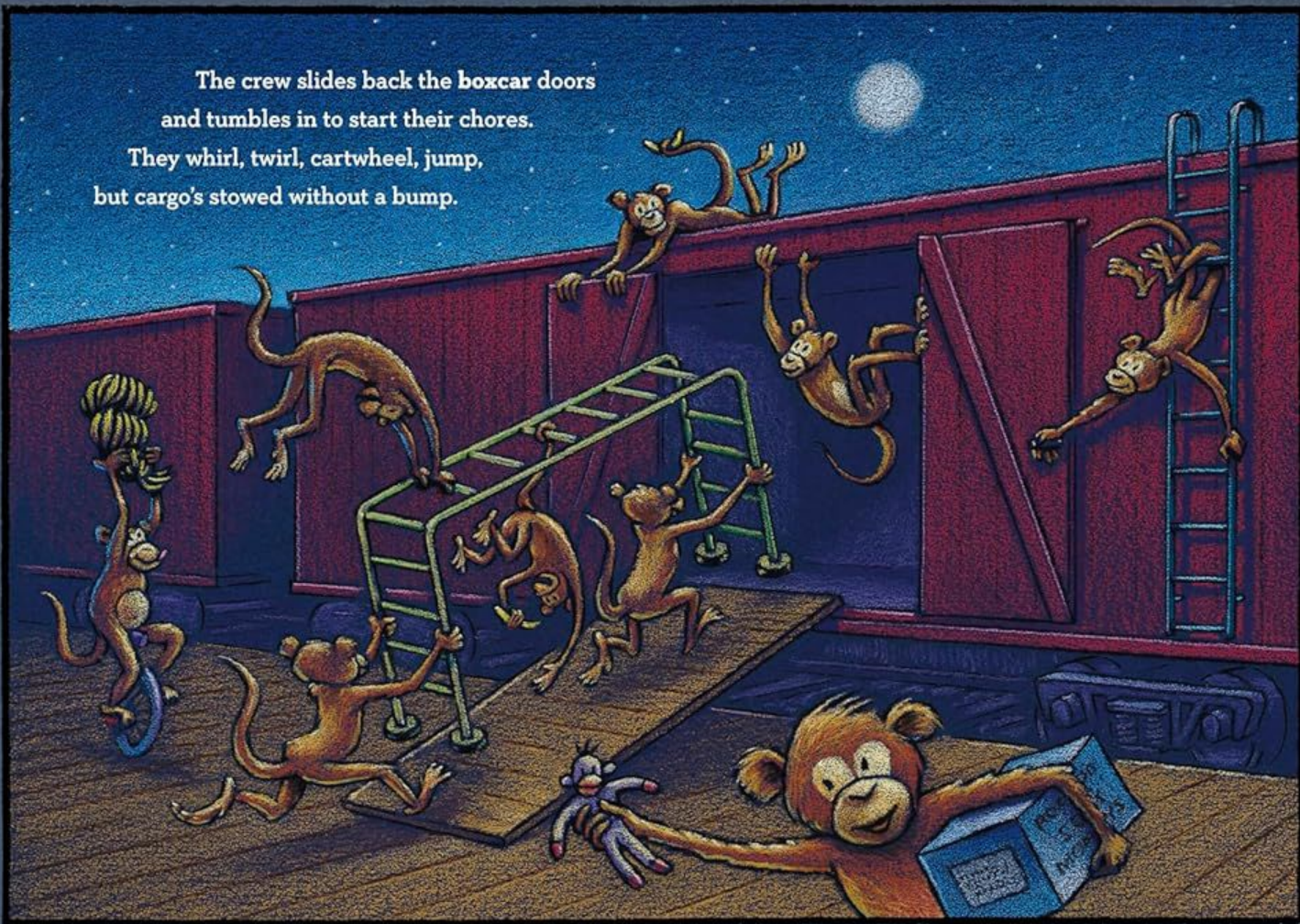
Hissing steam. Brakes squeal. Then **STOP!**



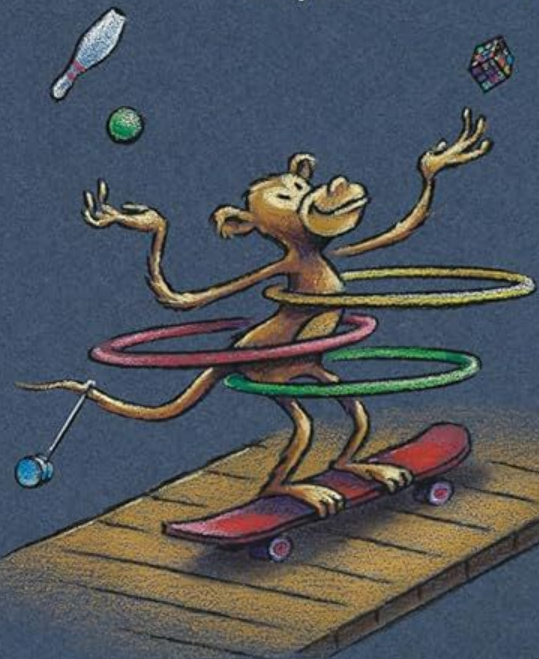
The driver signals
to the crew—
each worker knows
just what to do.
Quick!
Before it gets too late,
start to load up
all the freight.

Everything will
soon be stowed,
a train car matched
to every load.

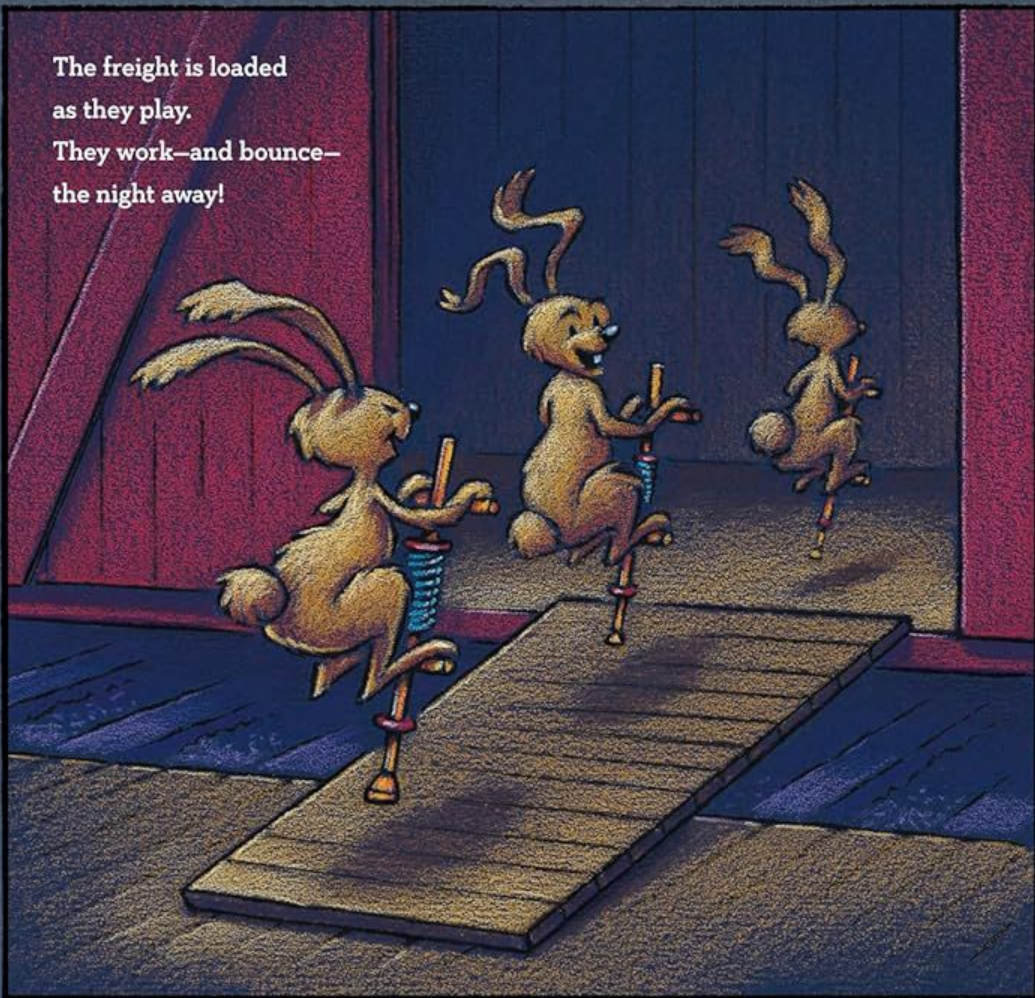
The crew slides back the boxcar doors
and tumbles in to start their chores.
They whirl, twirl, cartwheel, jump,
but cargo's stowed without a bump.



Things that rock and roll
and spin,
all are juggled
safely in.



The freight is loaded
as they play.
They work—and bounce—
the night away!

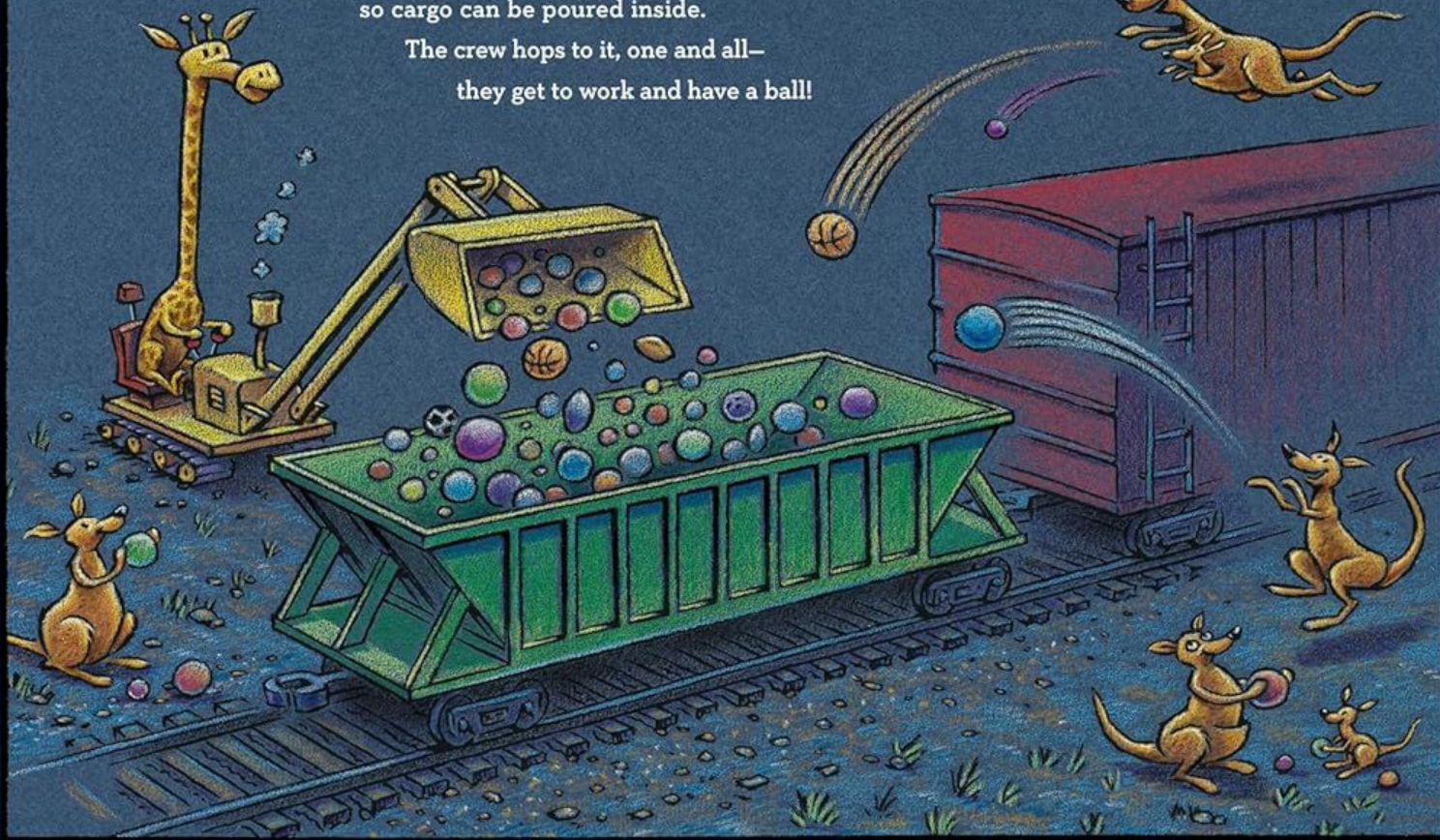


Building blocks,
erector sets,
bikes and kites—
and model jets—



the boxcar's made
to safely haul
almost
anything at all!

The hopper's top is open wide,
so cargo can be poured inside.
The crew hops to it, one and all—
they get to work and have a ball!

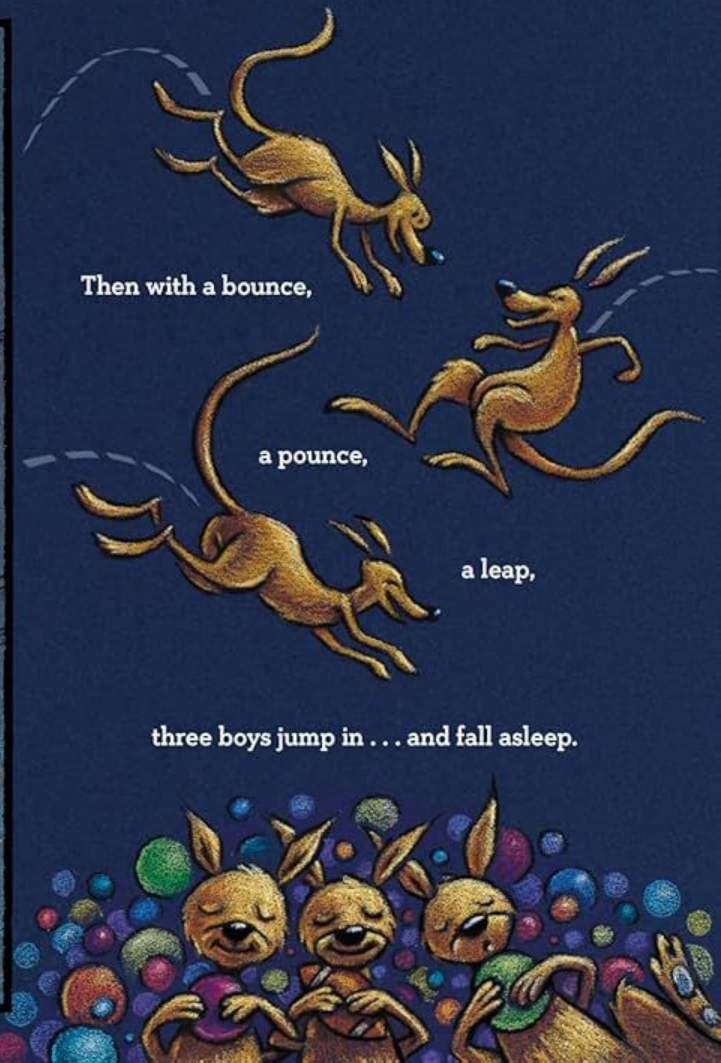


Then with a bounce,

a pounce,

a leap,

three boys jump in . . . and fall asleep.



Tankers, lined up in a row,
are getting filled with paints to go.
Purple, yellow, green, and blue:
a color convoy, coming through.

